

## DIN-Signal 2C/2R shroud press-in 8.30

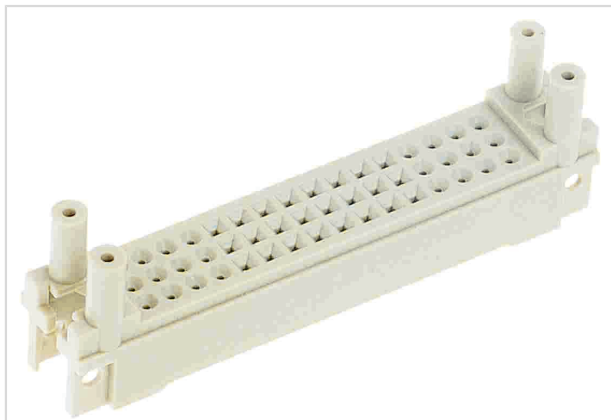


Image is for illustration purposes only. Please refer to product description.

Part number	09 23 000 9954
Specification	DIN-Signal 2C/2R shroud press-in 8.30
HARTING eCatalogue	<a href="https://b2b.harting.com/09230009954">https://b2b.harting.com/09230009954</a>

### Identification

Category	Accessories
Series	DIN 41612
Type of accessory	Pin shroud
Description of the accessory	for female connectors type 2C for male connectors type 2R
Features	lead-free

### Version

Termination length	16.2 mm
	17 mm
	20 mm
Fixing	Press-in fixing

### Technical characteristics

Isolation group	IIIa ( $175 \leq CTI < 400$ )
PCB thickness	3.4 mm $\pm 0.5$
	4.2 mm $\pm 0.5$
	7.2 mm $\pm 0.5$

### Material properties

Material (accessories)	Thermoplastic
Colour (accessories)	RAL 7032 (pebble grey)
Material flammability class acc. to UL 94	V-0
RoHS	compliant
ELV status	compliant



**Pushing Performance**  
Since 1945

## Material properties

China RoHS	e
REACH Annex XVII substances	Not contained
REACH ANNEX XIV substances	Not contained
REACH SVHC substances	Not contained

## Specifications and approvals

Railway classification	F1/I2 acc. to NFF 16-101/102
------------------------	------------------------------

## Commercial data

Packaging size	100
Net weight	3.4 g
Country of origin	China
European customs tariff number	85389099
GTIN	5713140041240
eCl@ss	27440292 Connector component (accessories)